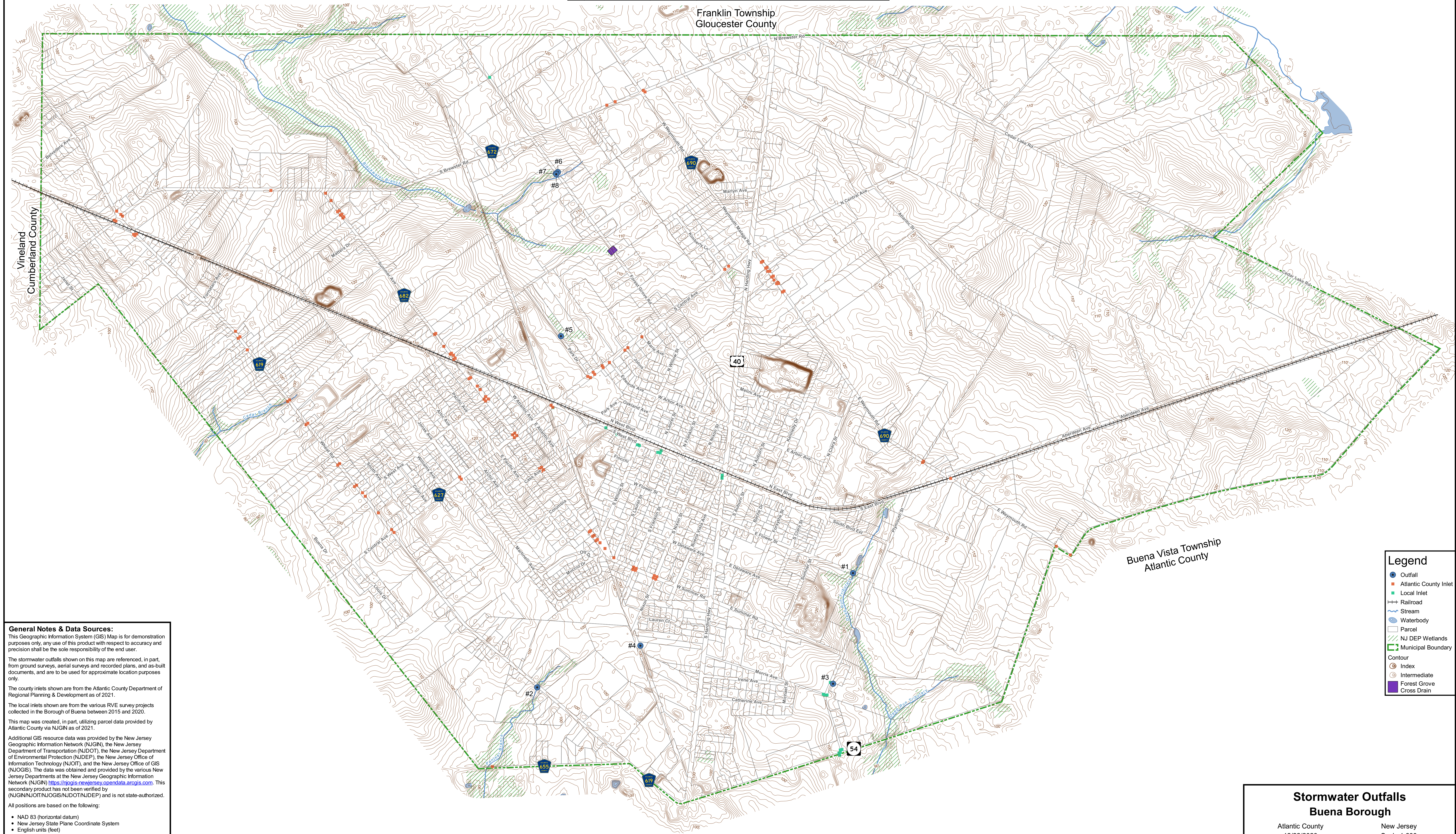
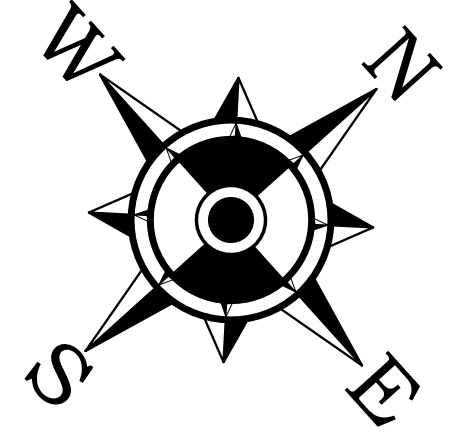


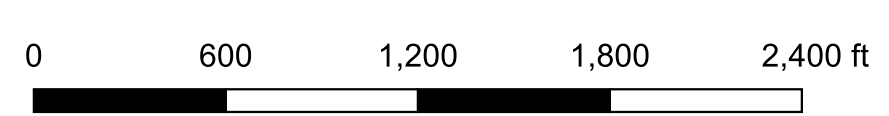
REVISIONS				
NO.	DESCRIPTION	DATE	BY	CHK BY
1	Added outfalls 7 & 8 from Kimberly Draining Project	2/26/2021	ES	KZ
2				
3				
4				

ID	RoadName	Pipe Size	Type Area Receiving	Northing	Easting
#1	E Flower St	Ukn	Wetland	252705.489	371196.671
#2	Wheat Rd	36"	Stream/River	247436.97	369056.771
#3	Plymouth St	15"	Stream/River	251200.698	372363.245
#4	Nixon St	30"	Lake/Pond	249208.409	369701.006
#5	Park Dr	Ukn	Wetland	251715.183	364906.296
#6	Forest Grove Rd	15"	Ditch	253535.867	362806.312
#7	Forest Grove Rd	24"	Wetlands	253494.046	362803.354
#8	Forest Grove Rd	30"	Wetlands	253490.867	362815.606



**General Notes & Data Sources:**  
 This Geographic Information System (GIS) Map is for demonstration purposes only, any use of this product with respect to accuracy and precision shall be the sole responsibility of the end user.  
 The stormwater outfalls shown on this map are referenced, in part, from ground surveys, aerial surveys and recorded plans, and as-built documents, and are to be used for approximate location purposes only.  
 The county inlets shown are from the Atlantic County Department of Regional Planning & Development as of 2021.  
 The local inlets shown are from the various RVE survey projects collected in the Borough of Buena between 2015 and 2020.  
 This map was created, in part, utilizing parcel data provided by Atlantic County via NJGN as of 2021.  
 Additional GIS resource data was provided by the New Jersey Geographic Information Network (NJGN), the New Jersey Department of Transportation (NJDOT), the New Jersey Department of Environmental Protection (NJDEP), the New Jersey Office of Information Technology (NJGIT), and the New Jersey Office of GIS (NJOGIS). The data was obtained and provided by the various New Jersey Departments at the New Jersey Geographic Information Network (NJGN) <https://njgis-newjersey.opendata.arcgis.com>. This secondary product has not been verified by (NJGIN/NJOIT/NJOGIS/NJDOT/NJDEP) and is not state-authorized.  
 All positions are based on the following:  
 • NAD 83 (horizontal datum)  
 • New Jersey State Plane Coordinate System  
 • English units (feet)  
 The geodetic accuracy and precision of the Geographic Information System (GIS) data contained in this mapping has not been developed nor verified by a professional licensed land surveyor and shall not be nor is intended to be used in matters requiring delineation and location of true ground horizontal and/or vertical controls, unless otherwise noted.

Legend	
	Outfall
	Atlantic County Inlet
	Local Inlet
	Railroad
	Stream
	Waterbody
	NJ DEP Wetlands
	Municipal Boundary
	Contour
	Index
	Intermediate
	Forest Grove
	Cross Drain



**Stormwater Outfalls**  
**Buena Borough**  
 Atlantic County New Jersey  
 12/22/2020 Scale 1:600

**REMINGTON & VERNICK ENGINEERS**  
 232 KNIGS HIGHWAY EAST, HADDONFIELD, NJ 08033  
 (856) 795-9595, FAX (856) 795-1882, WWW.RVE.COM  
Certificate of Authorization: 21 SA 28093300  
 —ENGINEERING EXCELLENCE—